

## Toothpaste alone does not prevent dental erosion or hypersensitivity

An analysis of nine toothpastes found that none of them protects enamel or prevents erosive wear

**Date:** March 13, 2018

**Source:** Fundação de Amparo à Pesquisa do Estado de São Paulo

**Summary:** An analysis of nine toothpastes found that none of them protects enamel or prevents erosive wear. Specialists stress that diet and treatment by a dentist are key to avoid the problems originated by dentin exposure.

### FULL STORY

---

The rising prevalence of dental erosion and dentin hypersensitivity has led to the emergence of more and more toothpastes on the market that claim to treat these problems. While no such toothpaste existed 20 years ago, today, many brands with different attributes are being offered.

However, a study conducted at the University of Bern in Switzerland with the participation of a researcher supported by a scholarship from the São Paulo Research Foundation -- FAPESP showed that none of the nine analyzed toothpastes was capable of mitigating enamel surface loss, a key factor in tooth erosion and dentin hypersensitivity.

"Research has shown that dentin must be exposed with open tubules in order for there to be hypersensitivity, and erosion is one of the causes of dentin exposure. This is why, in our study, we analyzed toothpastes that claim to be anti-erosive and/or desensitizing," said Samira Helena João-Souza, a PhD scholar at the University of São Paulo's School of Dentistry (FO-USP) in Brazil and first author of the article.

According to an article published in *Scientific Reports*, all of the tested toothpastes caused different amounts of enamel surface loss, and none of the toothpastes afforded protection against enamel erosion and abrasion.

The authors of the study stressed that these toothpastes perform a function but that they should be used as a complement, not as a treatment, strictly speaking. According to João-Souza, at least three factors are required: treatment prescribed by a dentist, use of an appropriate toothpaste, and a change in lifestyle, especially diet.

"Dental erosion is multifactorial. It has to do with brushing, and above all, with diet. Food and drink are increasingly acidic as a result of industrial processing," she said.

The researcher highlights that dental erosion is a chronic loss of dental hard tissue caused by acid without bacterial involvement -- unlike caries, which is bacteria-related. When it is associated with mechanical action, such as brushing, it results in erosive wear. In these situations, patients typically experience discomfort when they drink or eat something cold, hot or sweet.

"They come to the clinic with the complaint that they have caries, but actually, the problem is caused by dentin exposure due to improper brushing with [a] very abrasive toothpaste, for example, combined with frequent consumption of large amounts of acidic foods and beverages," said Professor Ana Cecília Corrêa Aranha, João-Souza's supervisor and a co-author of the article.

In our clinical work, we see patients with this problem in the cervical region between [the] gum and tooth. The enamel in this region is thinner and more susceptible to the problem," she added.

## Methodology

The scientists tested eight anti-erosive and/or desensitizing toothpastes and one control toothpaste, all of which are available from pharmacies and drugstores in Brazil or Europe.

The research simulated the effect of brushing once a day with exposure to an acid solution for five consecutive days on tooth enamel. The study used human premolars donated for scientific research purposes, artificial saliva, and an automatic brushing machine.

"We used a microhardness test to calculate enamel loss due to brushing with the toothpastes tested. The chemical analysis consisted of measuring toothpaste pH and levels of tin, calcium, phosphate and fluoride," João-Souza explained.

The physical analysis consisted of weighing the abrasive particles contained in the toothpastes, measuring their size, and testing wettability -- the ease with which toothpaste mixed with artificial saliva could be spread on the tooth surface.

"During brushing with these toothpastes mixed with artificial saliva, we found that the properties of the toothpastes were different, so we decided to broaden the scope of the analysis to include chemical and physical factors. This [broadening] made the study more comprehensive," João-Souza said.

## Statistically similar

All of the analyzed toothpastes caused progressive tooth surface loss in the five-day period. "None of them was better than the others. Indication will depend on each case. The test showed that some [toothpastes] caused less surface loss than others, but they all resembled the control toothpaste [for] this criterion. Statistically, they were all similar, although numerically, there were differences," Aranha said.

"We're now working on other studies relating to dentin in order to think about possibilities, given that none of these toothpastes was found capable of preventing dental erosion or dentin hypersensitivity, which is a cause of concern."

The researchers plan to begin a more specific in vivo study that will also include pain evaluations.

## Story Source:

Materials provided by **Fundação de Amparo à Pesquisa do Estado de São Paulo**. *Note: Content may be edited for style and length.*

---

## Journal Reference:

1. Samira Helena João-Souza, Adrian Lussi, Tommy Baumann, Taís Scaramucci, Ana Cecília Corrêa Aranha, Thiago Saads Carvalho. **Chemical and physical factors of desensitizing and/or anti-erosive toothpastes associated with lower erosive tooth wear**. *Scientific Reports*, 2017; 7 (1) DOI: 10.1038/s41598-017-18154-8

---

## Cite This Page:

MLA

APA

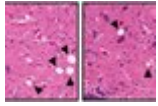
Chicago

---

Fundação de Amparo à Pesquisa do Estado de São Paulo. "Toothpaste alone does not prevent dental erosion or hypersensitivity: An analysis of nine toothpastes found that none of them protects enamel or prevents erosive wear." ScienceDaily. ScienceDaily, 13 March 2018. <[www.sciencedaily.com/releases/2018/03/180313152118.htm](http://www.sciencedaily.com/releases/2018/03/180313152118.htm)>.

## RELATED STORIES

---



### Saving Neurons May Offer New Approach for Treating Alzheimer's Disease

Nov. 6, 2017 — Treatment with a neuroprotective compound that saves brain cells from dying also prevents the development of depression-like behavior and the later onset of memory and learning problems in a rat ... **read more »**

### Triclosan Accumulates in Toothbrushes, Potentially Prolonging Users' Exposure

Oct. 25, 2017 — In September, a ban on triclosan in over-the-counter antiseptic soaps, gels and wipes went into effect in the US. But the antibacterial ingredient is still allowed in toothpastes for its reported ... **read more »**

### Grape Seed Extract Could Extend Life of Resin Fillings

May 9, 2017 — A natural compound found in grape seed extract could be used to strengthen dentin -- the tissue beneath a tooth's enamel -- and increase the life of resin fillings, according to new ... **read more »**



### Enamel Evolved in the Skin and Colonized the Teeth Much Later

Sep. 23, 2015 — When did the enamel that covers our teeth evolve? And where in the body did this tissue first appear? In a new study, researchers combined data from two very different research fields -- paleontology ... **read more »**